

# PRIVATE OFFICE SUITES FOR LEASE

1300 Iroquois Ave. Naperville, IL 60563



**1st Floor Private Suites 1,100 - 2,666 SF**



## **IROQUOIS PROFESSIONAL CENTER**

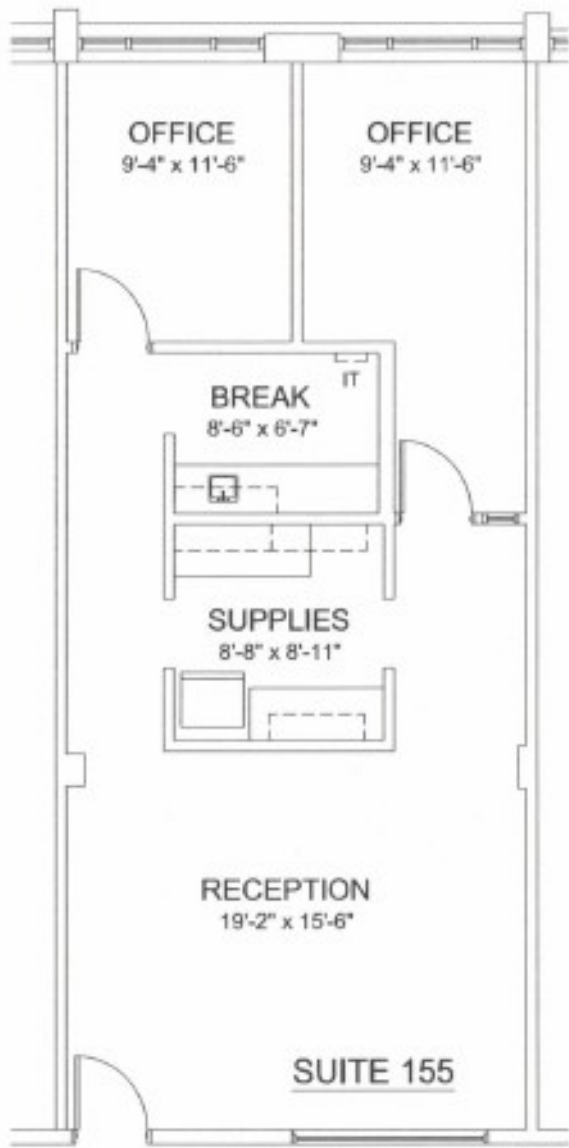
- Easy access to 355 and 88
- One block south of Ogden & Naperville Rd.
- Newly remodeled Common Area
- No CAM or Taxes!
- Elevator
- On-Site Parking and Property Mgmt.
- 24 / 7 accessibility
- LL Storage Available upon request

# 1st Floor Private Office Suites

## 1,100 - 2,666 SF

### Suite 155 1,100 SF

2 Offices, Break Room, Storage, and Open Workspace, LED lights



### Suite 150 1,566 SF

3 Large Offices, Storage Room, and Open Workspace

