

## OFFICE FOR LEASE



### TOTAL AVAILABLE: 697 - 2,160 SF

- Rent includes all CAM or Taxes!
- Easy access to I-355 and I-88
- Skylights Providing Ample Natural Light
- Open Natural Cedar Ceiling on 2nd Level
- Oversized Parking Lot For Employees

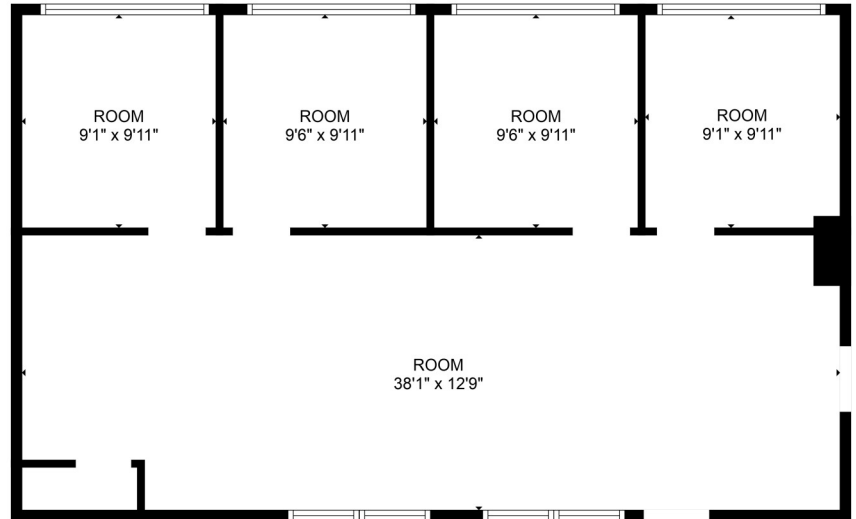
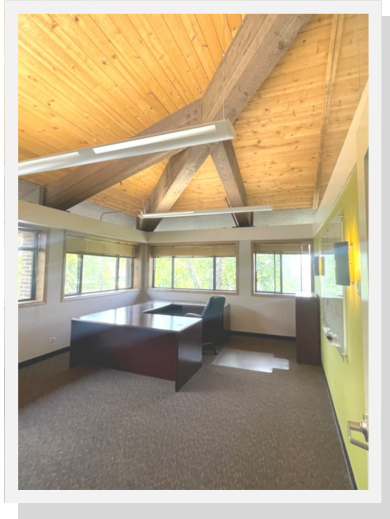
### CONTACT

Becky Bossard  
630.737.1200 Main  
773.720.0703 Mobile

Schulz Properties, Ltd.  
947 Maple Avenue, Downers Grove, IL



**1,160 Rentable Square Feet**



**2,610 Rentable Square Feet**

