

A Professional Office Community

WHEATON COMMONS



NEWLY RENOVATED BUILDING

PRIVATE OFFICES FOR LEASE

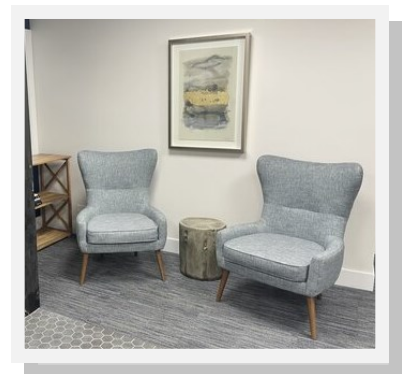
213 S. Wheaton Ave. Wheaton, IL 60187

Love where you work

Located in DOWNTOWN WHEATON, WHEATON COMMONS is a professional office community. We offer professional office space, with shared amenities, in a walkable suburban downtown environment.

Benefits of membership include:

- ◆ 1-2 Person Private Offices with High speed WIFI, CAT 6
- ◆ Secured, 24/7 access with indoor/outdoor security cameras
- ◆ Shared meeting room access
- ◆ Shared reception/waiting area
- ◆ Shared kitchen and lounge/casual meeting space
- ◆ Bright, modern and fresh aesthetic
- ◆ Located steps from Metra station in booming downtown Wheaton
- ◆ Walk to restaurants, coffee shops /cafes, bars, entertainment and Wheaton College
- ◆ Affordable lease terms with private offices available starting at **\$550/month**



Becky Bossard
becky@schulzproperties.com

Main: 630.737.1200 Cell: 773.720.0703
947 Maple Ave. Downers Grove, IL 60515

213 S. Wheaton Ave. Wheaton, IL 60187

WH



WHEATON COMMONS



Our offices are ideal for small business owners, creatives, professionals and any one who works remotely and wants to get out of a home office.



Schulz
PROPERTIES, LTD.

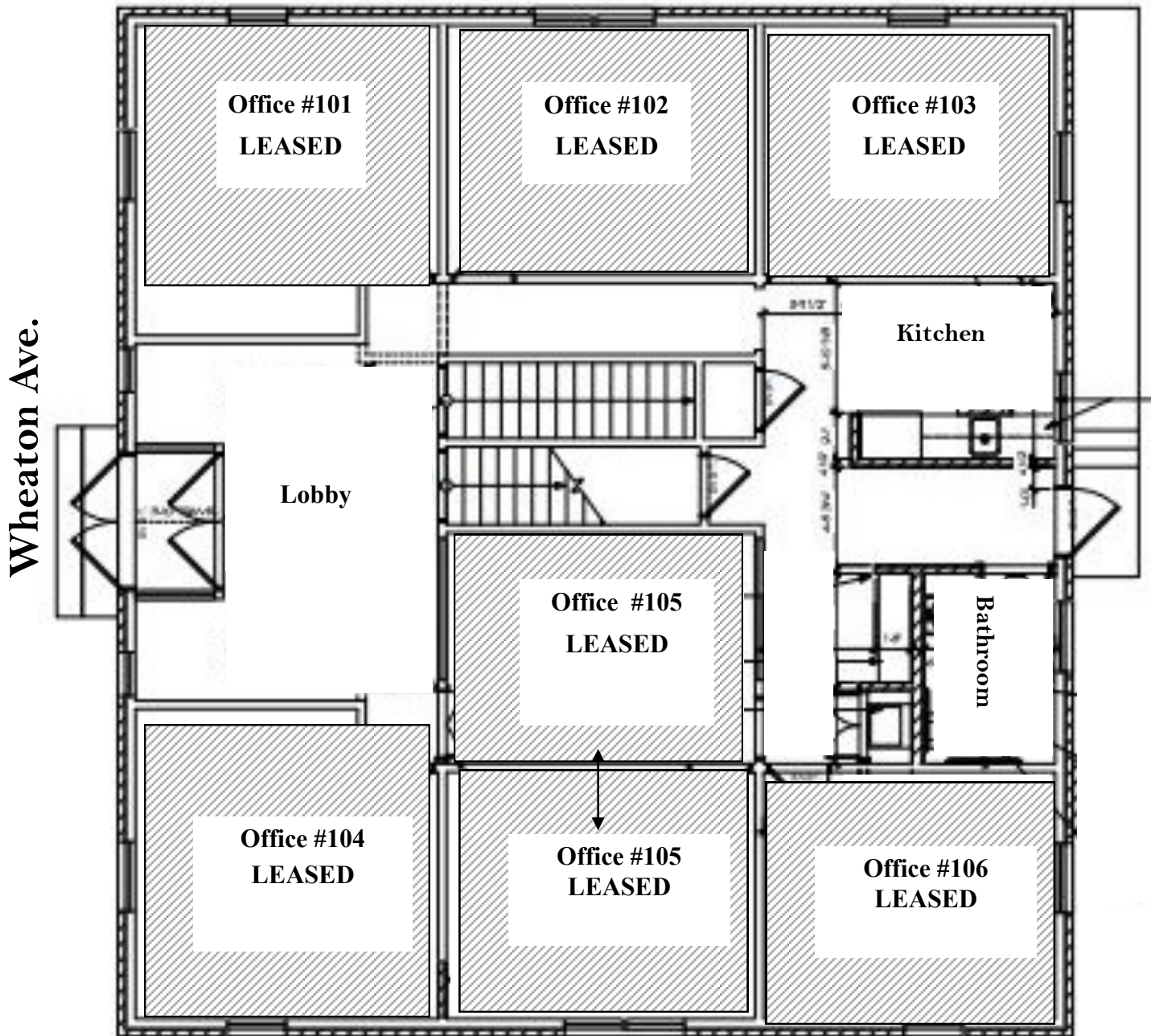
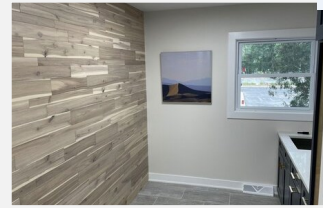
Becky Bossard
becky@schulzproperties.com
Main: 630.737.1200 Cell: 773.720.0703
947 Maple Ave. Downers Grove, IL 60515

213 S. Wheaton Ave. Wheaton, IL 60187

WH

1st Floor - 6 Private Offices

Walk in Lobby/Waiting Area, Kitchen, ADA Bathroom



Schulz
PROPERTIES, LTD.

Willow Ave.

Becky Bossard

becky@schulzproperties.com

Main: 630.737.1200 Cell: 773.720.0703

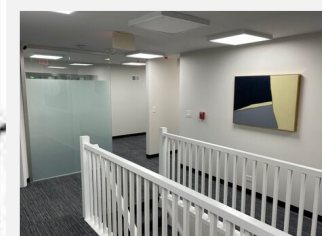
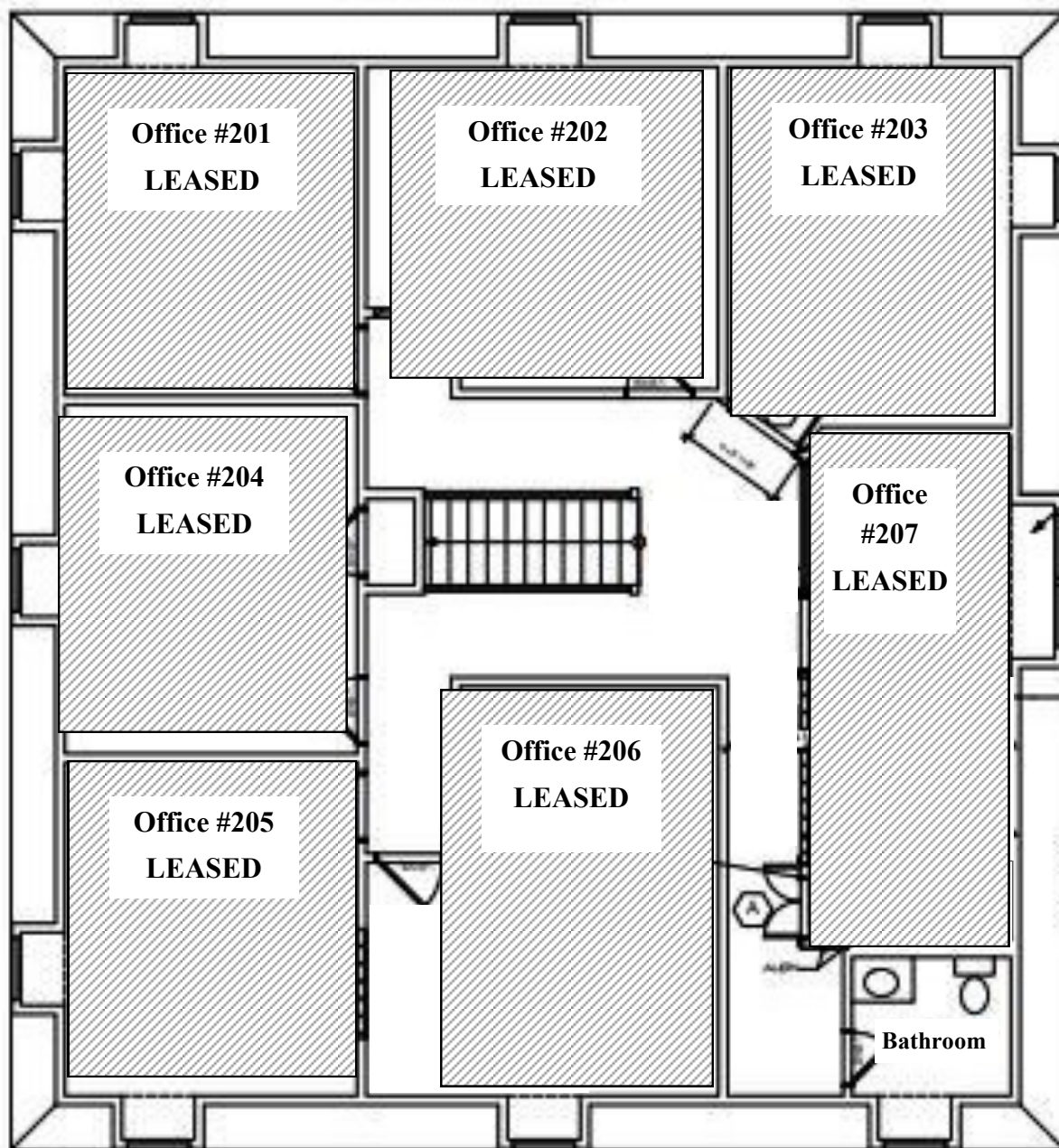
947 Maple Ave. Downers Grove, IL 60515

213 S. Wheaton Ave. Wheaton, IL 60187

WH

2nd Floor - 7 Private Offices

Spacious Window-lined Offices and Private Bath



Willow Ave.

Schulz
PROPERTIES, LTD.

Becky Bossard

becky@schulzproperties.com

Main: 630.737.1200 Cell: 773.720.0703

947 Maple Ave. Downers Grove, IL 60515

213 S. Wheaton Ave. Wheaton, IL 60187

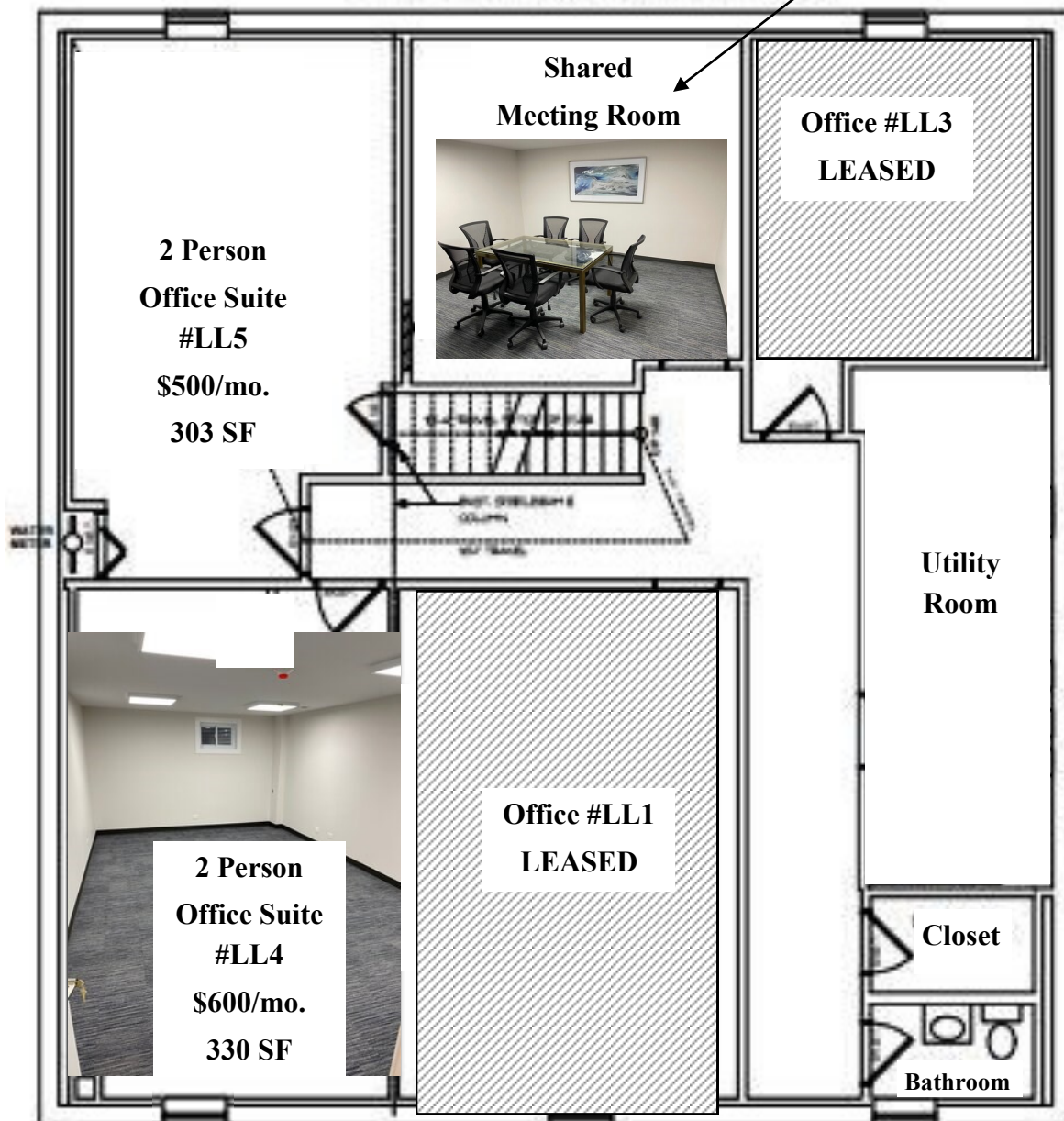
WH

Lower Level - 4 Private Offices

Window-lined Offices, Shared Meeting Room, and Private Bathroom



Wheaton Ave.



Willow Ave.

Schulz
PROPERTIES, LTD.

Becky Bossard

becky@schulzproperties.com

Main: 630.737.1200 Cell: 773.720.0703

947 Maple Ave. Downers Grove, IL 60515