

# OFFICE FOR LEASE - Estancia of Tinley Park

## 100,000 SF Executive Center - 6 Building Campus

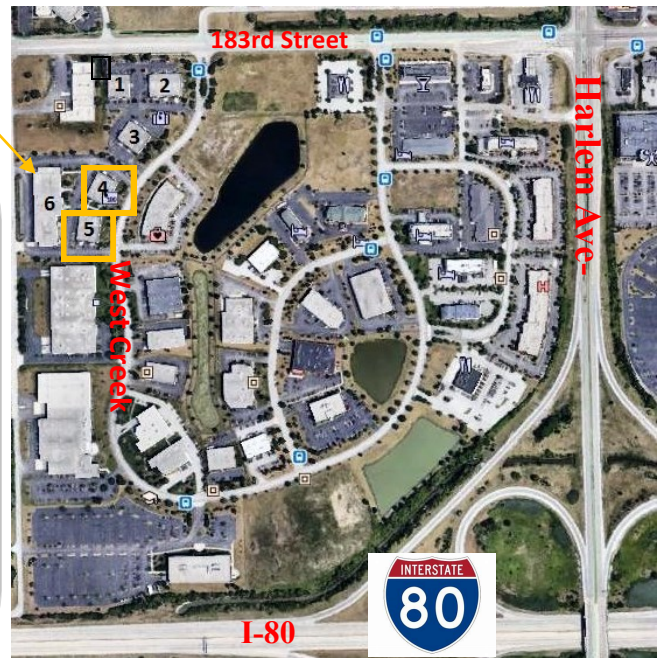


### Two Remaining Offices for Lease

**Building #4      2,528 SF**

**Building #5      2,203 SF**

**Easy access to I-80 & Harlem**



*Schulz*  
PROPERTIES, LTD.

Theresa Schulz  
[tschulz@schulzproperties.com](mailto:tschulz@schulzproperties.com)  
[www.schulzproperties.com](http://www.schulzproperties.com)

947 Maple Ave, Downers Grove, IL 60515

MAIN: 630.737.1200 \* CELL: 630.453.1230

# Estancia Executive Centre, Tinley Park, IL

**Office Building #1**

Fully Occupied

**Office Building #2**

Fully Occupied

**Office Building #3**

Fully Occupied

**Building #4 Office**

18408 West Creek Dr.

2,528 SF

\$14.00 Net Rent

*CAM/Taxes*

\$3.87/\$2.88/SF

**Building #5 Office**

18420 West Creek Dr.

2,203 SF

\$14.00 Net Rent

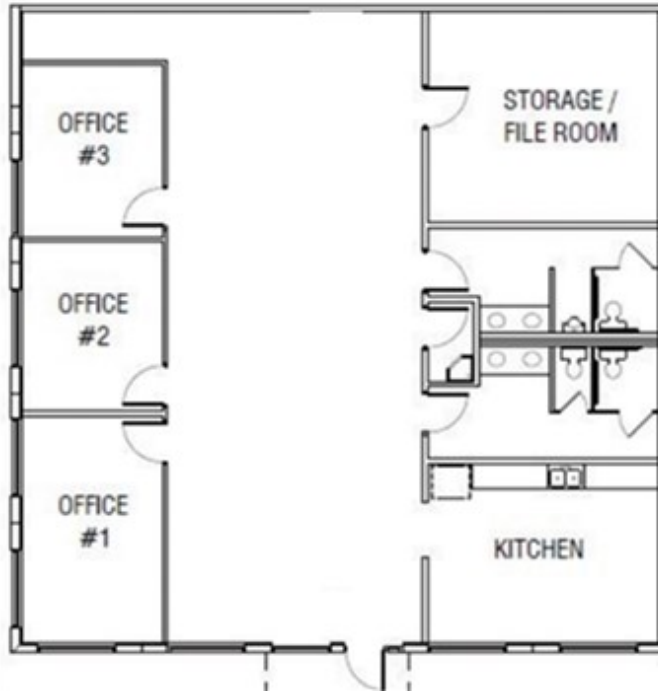
*CAM/Taxes*

\$3.87/\$2.88/SF

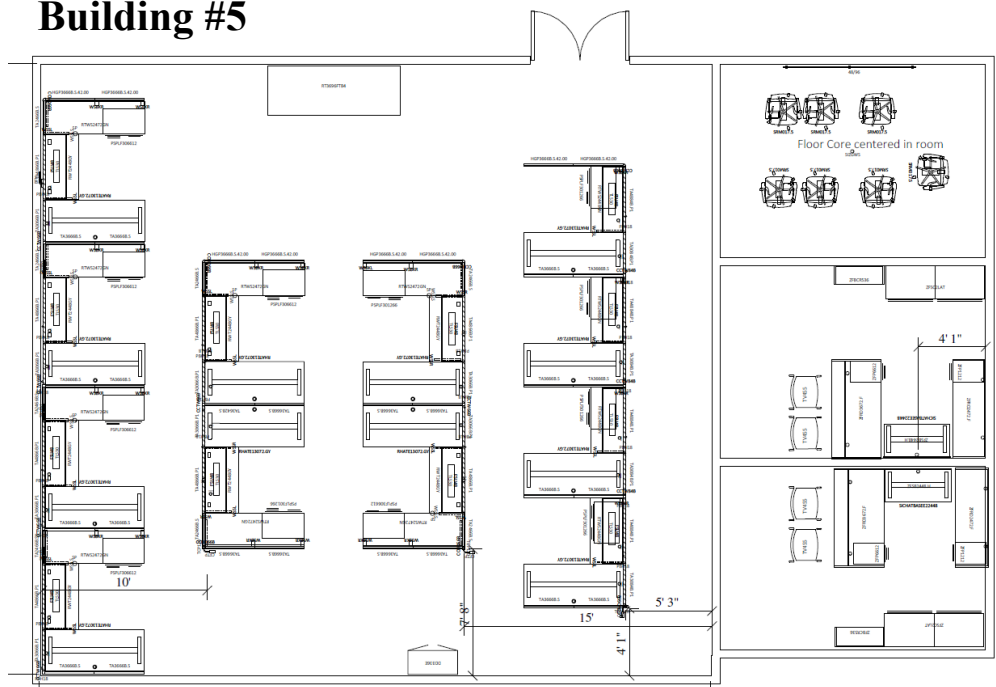
**Building #6 Industrial**

Fully Occupied

**Building #4**



**Building #5**



Theresa Schulz

[tschulz@schulzproperties.com](mailto:tschulz@schulzproperties.com)

[www.schulzproperties.com](http://www.schulzproperties.com)